



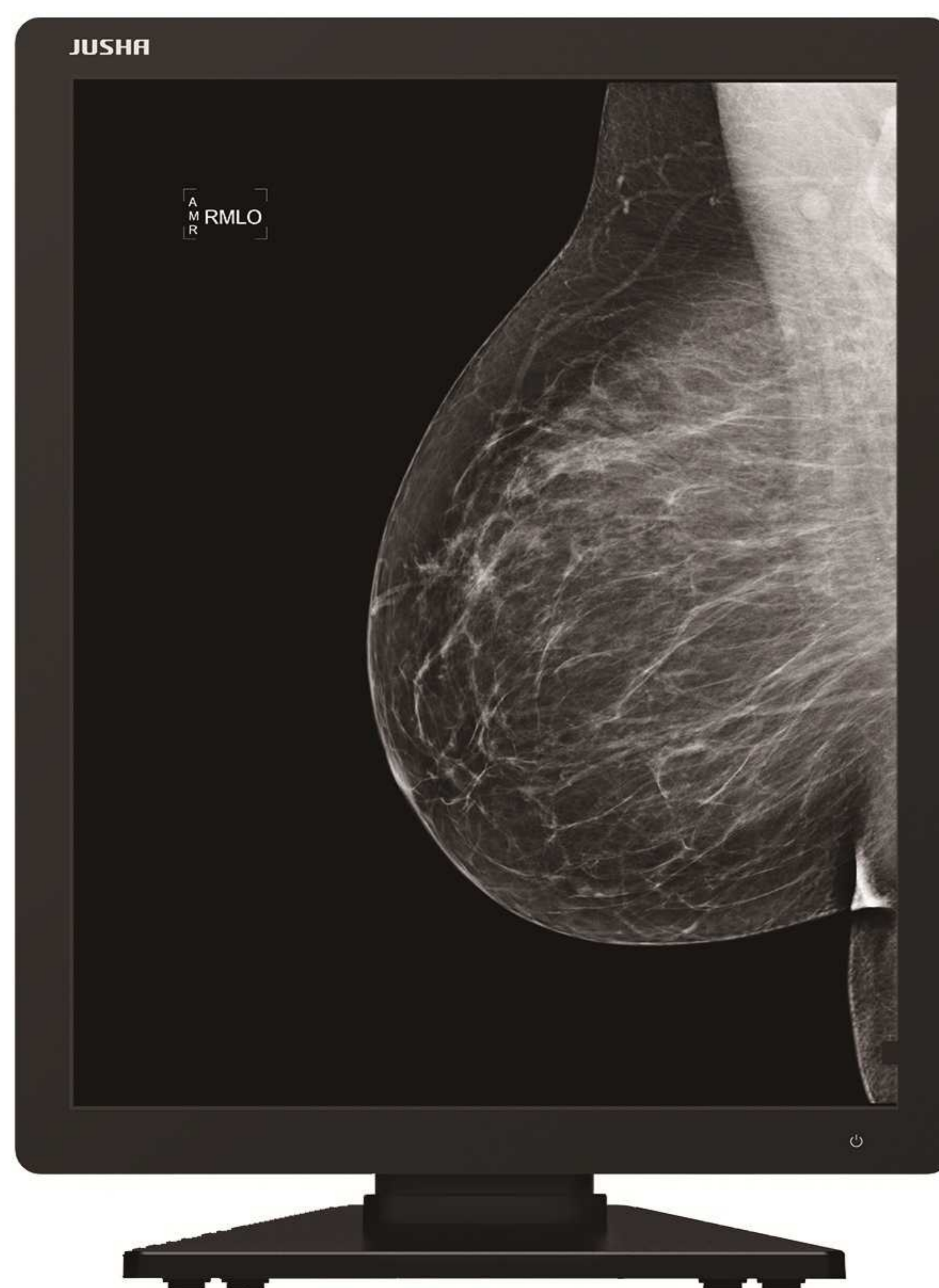
# C510G

Jusha 5MP Color Medical Breast Diagnostic Monitor

Jusha 5MP color professional monitor has extremely high resolution, high brightness and 48-bit color depth. The built-in dynamic LUT in line with the DICOM standard can adaptively adjust display brightness according to ambient brightness.

It is applicable to extremely demanding clinical diagnostic applications.

Such as Mammography, DR, CR and other radiological equipment.



Address: F8, Building 01, Nanjing International Service Outsourcing  
Building, No. 301 Hanzhongmen Street, Nanjing, Jiangsu, China  
TEL: +862583305050  
FAX: +862558783273  
Hotline: 400-820-0556800-820-0556

# Product Features

## 1. High Brightness

The maximum brightness of C510G is up to 1150cd/m<sup>2</sup>. Through the combination of brightness and contrast, a prominent layering that is more conducive to the position confirmation of the focus is formed.

## 2. High Gray Scale and High Color

C510G has a 48-bit color LUT that can display 281.47 trillion colors and the transition is smoother. It ensures that the 16-bit high-gray-scale image acquired by the high-end imaging equipment can be completely presented to the doctors, on the other hand. It is also helpful for diagnosing the early focal tissue that the doctors find and that with extremely small gray scale difference in the normal tissue.

## 3. Patented CGA technology

Jusha Colored Gray-scale Adaptive Correction Patent Technology (CGA) can automatically identify whether each pixel belongs to gray scale or color signal. The gray scale signal automatically applies DICOM curve correction, and color signal automatically applies GAMMA curve correction, truly realizing "integration". "Integration" ensures that the gray scale and color images are displayed correctly at the same time, ensuring the accuracy of diagnosis.

## 4. Spotlight

After the Spotlight function being turned on, the brightness of the full display is lowered. At the same time, the position coordinates of the cursor are captured through the application software, and the circular area or the rectangular area centered on the cursor coordinates is raised to the highest corrected brightness to achieve the effect similar to the stage spotlight, highlighting the focus and facilitating diagnosis.

## 5. Lightbox mode

With built-in reading light mode and film reading clip, the C510G monitor can be quickly opened through a shortcut key to facilitate the doctor to read the film.

## 6. Ambient Light Compensation Correction

Jusha's ambient light compensation and correction system can adaptively adjust the brightness of the display according to the brightness of the working environment and further adjust the effect of the display, more in line with the human eye observation ability, display images, and apply to various brightness environments.

## 7. Dynamic LUT

C510G adopts the dynamic LUT technology. Compared with the traditional LUT, the DICOM calibration is no longer limited to the preset brightness curve in the LUT. The dynamic LUT technology can be used for the DICOM collation of the real-time brightness and contrast of the display, thus ensuring that the entire brightness range of the medical display complies with the DICOM standard.

## 8. Patented SmarTouch Technology

Chinese doctors read a lot of films every day. They hope to read the film at low brightness and observe the details under high brightness to reduce the visual fatigue. Jusha has developed the patented SmarTouch technology. By tapping the SmarTouch button, the user can instantly change the brightness of the display. At the same time, based on the BIA technology, which can quickly improve the brightness, the brightness can be stabilized rapidly, and the doctor's vision is protected during accurate diagnosis at the same time.

## 9. Eco-Guardian Human Detection Power Saving System

The C510G Eco-guardian function uses remote sensing technology to detect the presence of a user in front of the display. During the set time, it can automatically enter the standby state, which can achieve better energy saving and extend the life of the display. In addition, this function can distinguish between non-living bodies such as people and chairs, making operation simpler and smarter.

## 10. Multi-monitor Configuration

Jusha C510G professional display supports multi-display configuration technology. By adopting DisplayPort port, multiple displays could be connected in series, free of complicated wiring.

## 11. Remote Quality Control System

Equipped with a front-sensing probe, the remote quality control system of Jusha's professional display can remotely monitor and control the status of all Jusha professional display through a computer network. Field maintenance and calibration of medical professional display at hospital sometimes may have some impact on diagnosis workflow, while remote operation is more convenient. Jusha remote quality control system provides customers with remote maintenance and monitoring services.

# Specification

Model	C510G
Backlight	LED
Diagonal Size	21.3"
Color Type	Color
Size of Display Area	422.4(H)×337.92(V)mm
Resolution	2560*2048/2048*2560
Point Distance	0.165×0.165mm
Response time: Ton+Tof (typ)	25ms(11ms+14ms)
Maximum brightness (typ)	1150cd/m <sup>2</sup>
Contrast (typ)	2000:1
Color depth (LUT)	281.47Trillion Colors(16bit)
Visual Angle	≥178° (CR≥10)
Sensor	Backlight sensor / front sensor / human body sensor / ambient light sensor / temperature sensor
Corrected Brightness (Typ)	500cd/m <sup>2</sup> (default)
Curve correction standard	DICOM Presets and GAMMA 2.2、GAMMA2.4
LUT	DICOM, GAMMA2.2, GAMMA2.4, DSA, DSI, CT/MRI
Video signal	Input port: DVI-D×1, DP×1 Output port: DP×1
Power requirement	24VDC-3.75A
Standard power	75W
Protective glass	Yes
Shell color	Black + Silver
Dimension with base (width * height * thickness)	385*552*237mm
Dimension without base (width * height * thickness)	385*475*77.1mm
Net weight	13.4Kg
Net weight (without base)	7.85Kg
Installation standard	VESA standard: 100*100mm